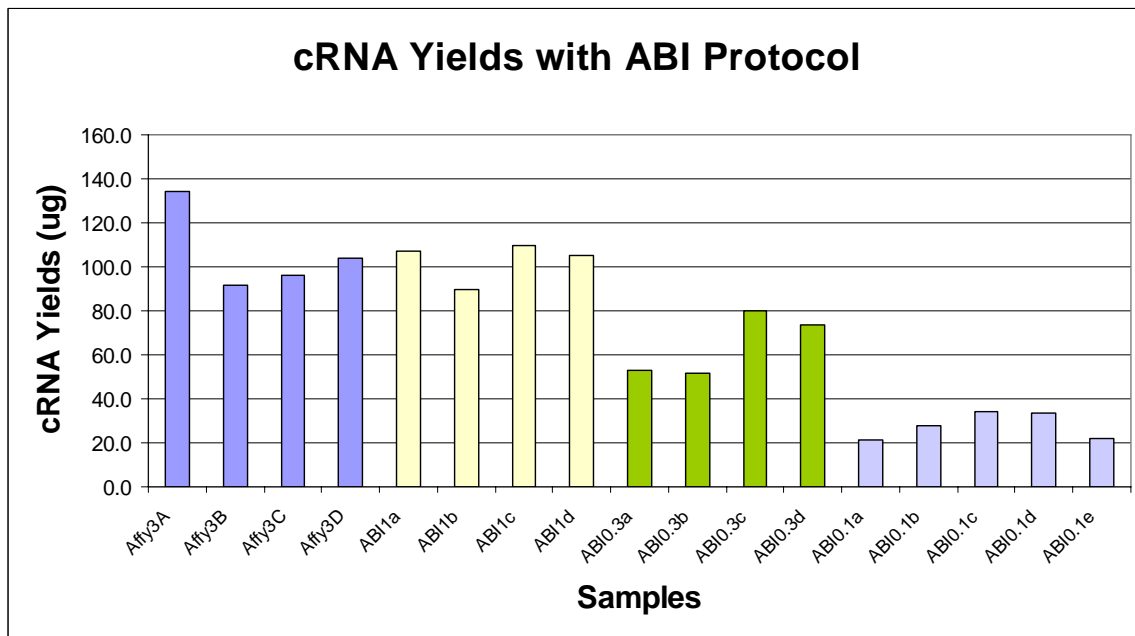


MessageAmp II Biotin Enhanced cRNA amplification kits for Affymetrix Microarrays

We are pleased to announce that MessageAmp II cRNA amplification protocol (ABI) is employed by our facility for Affymetrix Microarrays which requires 20 ug of cRNA for interrogation on the array. MessageAmp II cRNA amplification protocol can consistently/frequently generate sufficient labeled cRNA in a single round of amplification for array analysis from 300 ng/100 ng of high quality total RNA. The MessageAmp II protocol is highly reproducible and can be confidently used to label samples for Affymetrix expression arrays. However we do not recommend comparing two sets of data generated with different labeling protocols.

The cRNA yield comparison data were generated from our facility in 2007, where amplified samples originated from the same RNA source.



Blue: Affymetrix protocol (3 µg);

Yellow: ABI protocol (1,000 ng);

Green: ABI protocol (300 ng);

Gray: ABI protocol (100 ng).



Gene Expression and Genotyping Facility
Wolstein Research Building, 3-401
Case Western Reserve University
2103 Cornell Road
Cleveland, OH 44016

Affymetrix Gene Expression Array Quality Control Data from Six Preparations

Sample	Back Ground (Average)	%Present	3'/5' ratio (actin)	3'/5' ratio (GAPDH)	# Present Genes in Common (in group)	# Present Genes in Common (in group)	# Present Genes in Common (ALL together)
AFFY3a	78.65	41.62	1.17	0.79	15730		14524
AFFY3b	80.04	41.07	1.19	0.81	15730		14524
AFFY3c	65.76	37.44	1.09	0.79	15730		14524
ABI0.3a	44.85	42.64	1.21	0.82		16401	14524
ABI0.3b	49.05	41.79	1.19	0.81		16401	14524
ABI0.3c	39.83	40.37	1.32	0.85		16401	14524

Note: AFFY3: Start with 3 ug of total RNA with Affymetrix protocol

ABI0.3: Start with 0.3 ug of total RNA with ABI protocol



Gene Expression and Genotyping Facility
 Wolstein Research Building, 3-401
 Case Western Reserve University
 2103 Cornell Road
 Cleveland, OH 44016